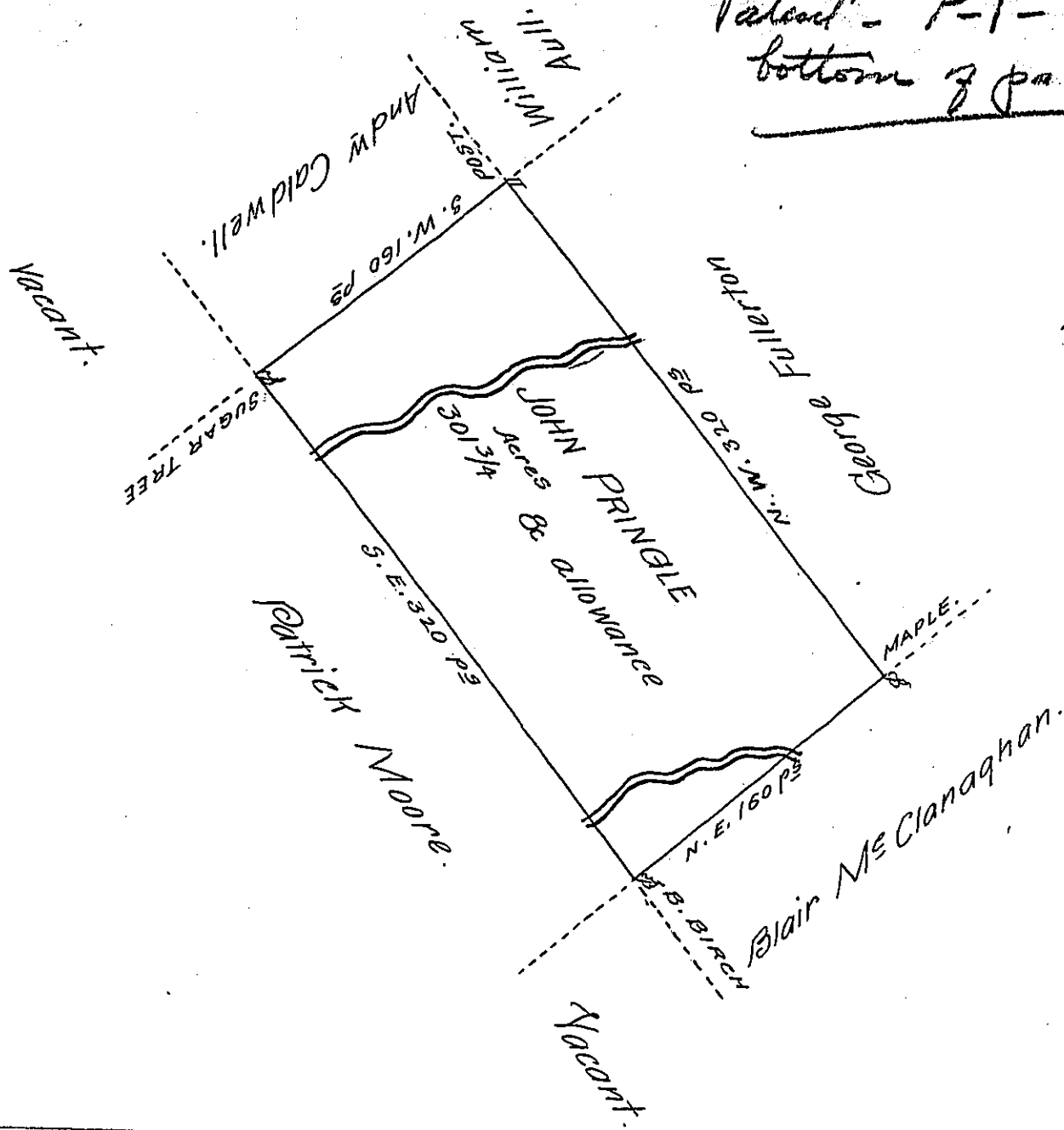


Patent - P-1-394
bottom of page

98

X



A Draught of a Tract of Land called — situate on some small
 Branches of Lahawanock Creek adjoining Land surveyed for Patrick -
 Moore and others in the County of Northumberland containing Three -
 hundred & One Acre $\frac{3}{4}$ of an Acre besides the usual allowance of 6 P.
 Cent for Roads &c. Surveyed for John Pringle the 2nd Day of May
 1775 In pursuance of a Warrant dated the 20th Day of February 1775

Chas^s Stewart Dep^t Sur^s

To John Lukens Esq^r
Survey^r Gen^l

IN TESTIMONY that the above is a copy of the original remaining on file in
 the Department of Internal Affairs of Pennsylvania, made
 conformably to an Act of Assembly approved the 16th day of
 February, 1833, I have hereunto set my Hand and caused
 the Seal of said Department to be affixed at Harrisburg,
 this fourteenth day of November 1905.

Isaac D. Brown
 Secretary of Internal Affairs.